



Wired Remote Control

Watchdog Dehumidifiers can be controlled using an optional remote accessory. The Watchdog Remote Control connects to your Watchdog Series Dehumidifier via a 25' CAT 5 cable. The remote control contains an integrated sensor which gives you multiple options for remotely controlling your unit, in addition to monitoring the conditions surrounding the dehumidifier.

One application for the remote control is to install the dehumidifier in one room with the conditioned air ducted into a second room that contains the remote. For example, the dehumidifier could be installed in a laundry room and ducted into a living room. The remote would then be mounted in the living room so the remote sensor can control the humidity and provide easy controls for the user.

Another useful application for the remote control is if the dehumidifier is in an area that's difficult to access on a regular basis. For instance, if your dehumidifier is installed in your crawl space, the remote could be mounted in your living space or garage. This provides you with an easy way to monitor the dehumidifier.

Setting up the Remote

1. On/Off (Power) Button $\text{\textcircled{P}}$

Press the on/off button and the machine will start running. Press the button again to turn the machine off.

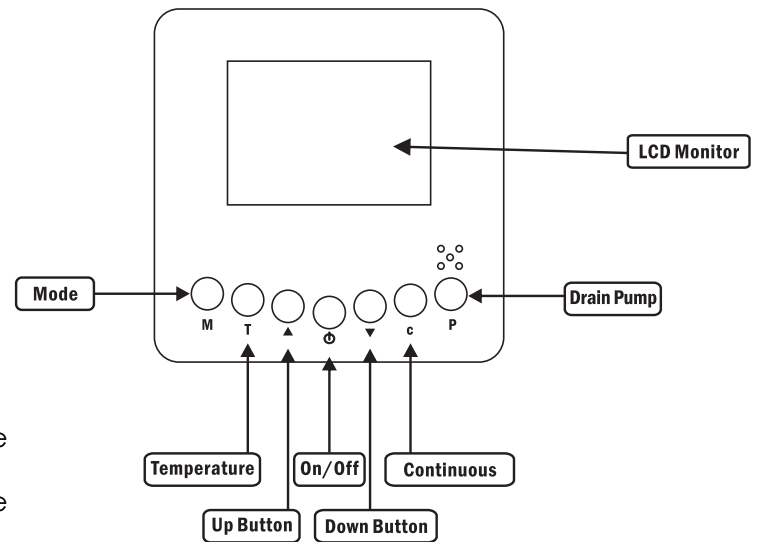
2. Up Button \blacktriangle / Down Button \blacktriangledown

Use the Up and Down arrow buttons to adjust the humidity level.

3. Mode **M**

Use the Mode button to switch between dehumidification and a ducted application.

- The $\text{\textcircled{S}}$ symbol on the display board indicates the sensor on the remote control is being utilized.
- The $\text{\textcircled{D}}$ symbol on the display board indicates the sensor on the dehumidifier is being utilized.



4. Temperature **T**

The T button changes the temperature reading on your remote. The remote comes from the factory in Celsius. Press this button once and it will switch to Fahrenheit.

5. Continuous **C**

Press this button to switch the unit into continuous mode **Cont.** will appear on the display to indicate continuous mode.

6. Drain Pump **P**

Pressing the drain pump button will remove water from the pump reservoir, so the unit can be safely moved or stored.

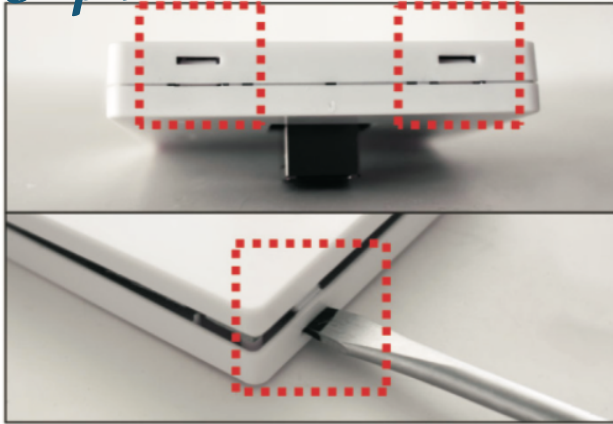
THIS FUNCTION IS ONLY AVAILABLE ON THE WATCHDOG 900C +NXT85c MODELS.

NOTE: Symbols mentioned above will only appear when the dehumidifier is powered on.

See reverse side for instructions on installing the remote.

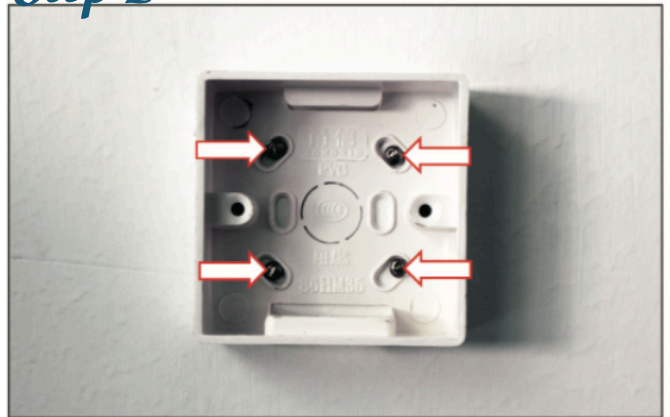
Remote Control Installation

Step 1



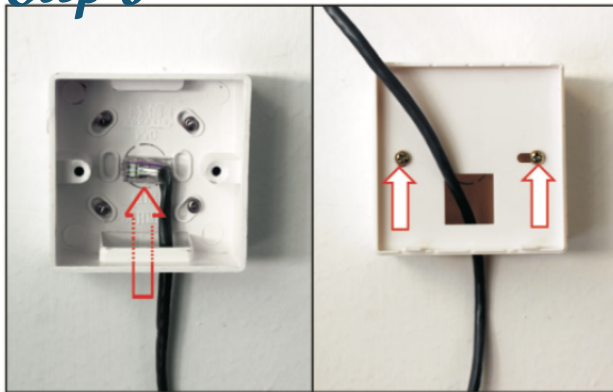
Carefully insert a flathead screwdriver into the 2 slots on the remote control display to separate the display panel from the cover.

Step 2



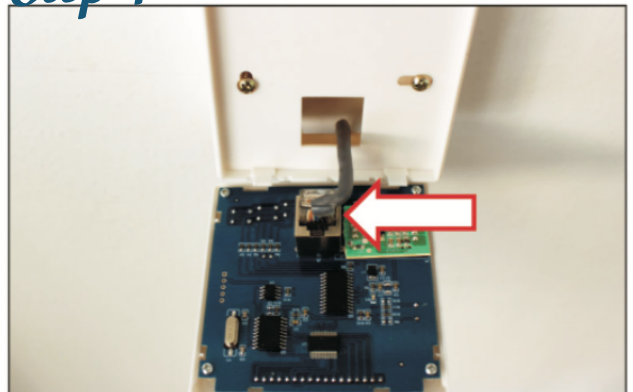
Use (4) screws (not provided) to mount the remote base onto desired location.

Step 3



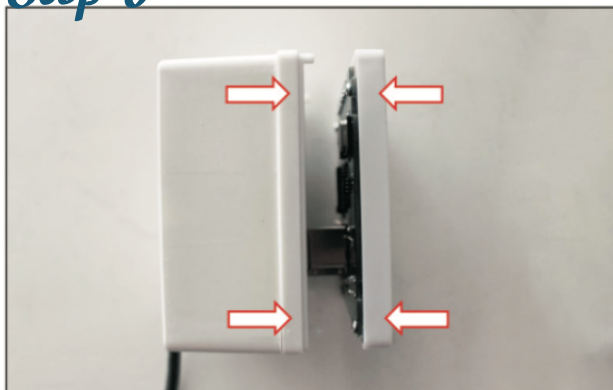
Thread one end of the cable through the mounted base, then through the cover. Use the provided (2) screws to attach the cover to the base.

Step 4



Plug the cable into the back of the display panel.

Step 5



Fit the display panel onto the base.

Step 6



Plug the cable into the dehumidifier.